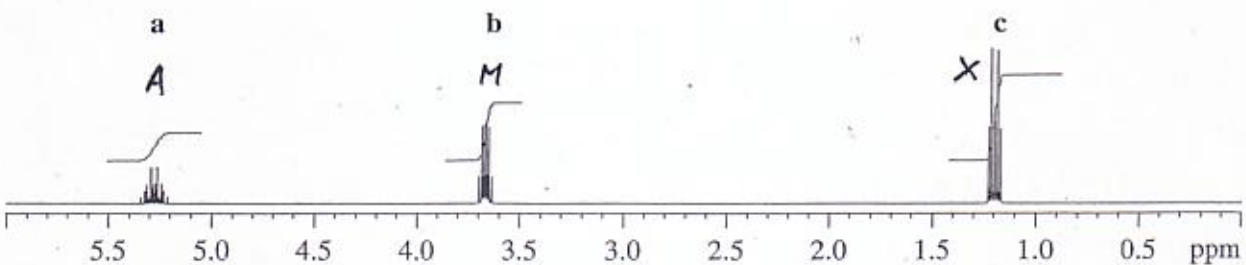
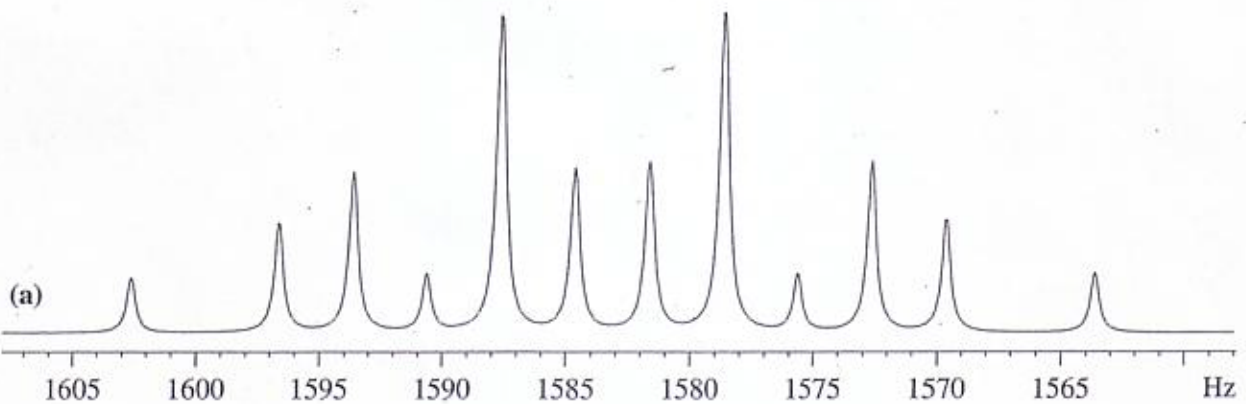
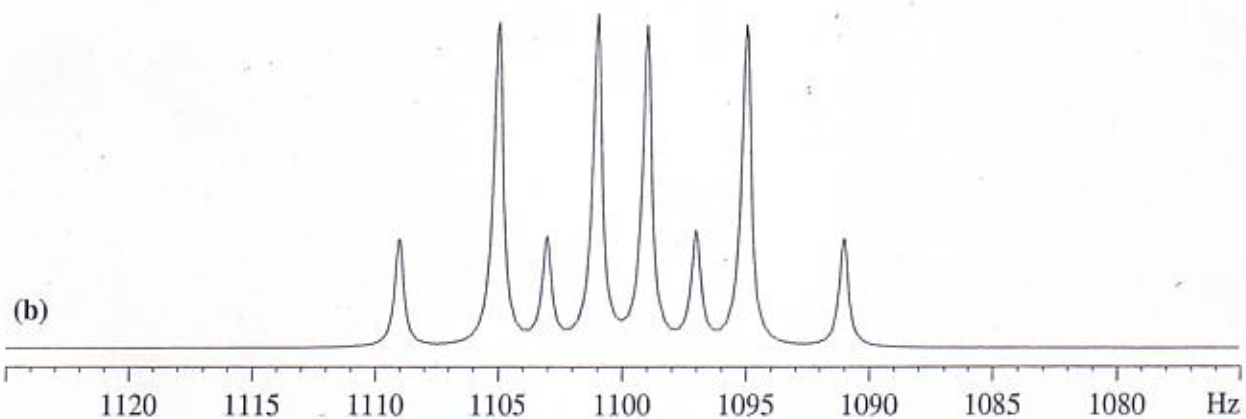
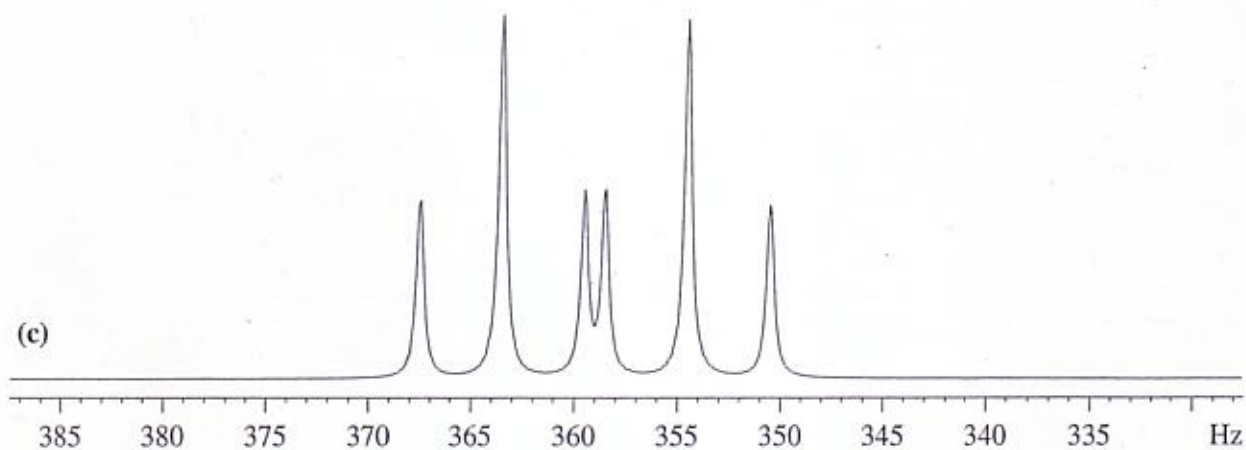


Which spin system is it (AMX classification)? Label each signal with its multiplicity. Determine all coupling constants (indicate which lines in a signal you take). Draw a tree diagram (use 1cm for 10 Hz) for the signal from proton(s) A and then, on the expanded spectrum (a), identify which lines make up a multiplet (by using the same letter for each line in the multiplet).



Which spin system is it (AMX classification)? Label each signal with its multiplicity. Determine all coupling constants (indicate which lines in a signal you take). Draw a tree diagram (use 1cm for 10 Hz) for the signal from proton(s) A and then, on the expanded spectrum (a), identify which lines make up a multiplet (by using the same letter for each line in the same multiplet).

